

Collection Cartography: mapping materials, users, and research at Royal Holloway

DAVID MORGAN – ROYAL HOLLOWAY, UNIVERSITY OF LONDON @DavidMorganEsq

AMY STUBBING – UNIVERSITY OF WESTMINSTER
@Amyodo

What is collection mapping?

Developing a systematic understanding of the contents and nature of our collection, how they are used and by whom, and the strengths and weaknesses of the collection.

A bit of Background

Helen Rimmer	(Associate Director)
Debbie Phillips	(Academic Liaison Librarian)
Annabel Valentine	(Archivist)
Amy Stubbing	(Collections Coordinator)
David Morgan	(Matadata, Discovery, and Analytics)
Nicola Cockarill	(Research Support Manager)
Chrissie Willis-Phillips	(Book Acquisitions Coordinator)

Why?

To futureproof

To streamline processes

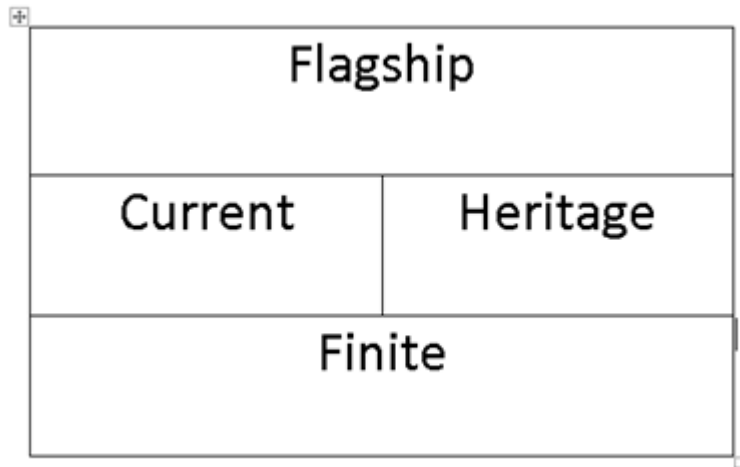
To contribute to the wider upcoming project as part of the University of London

Better understanding of our collection, data, and its problems

We really like data

How?

How – Categorising



Is it on a reading list/associated with teaching?	Is it associated with research outputs?	Is it rare?	Is it related to Archives/College history?	Categorisation
No	No	No	No	Finite
No	No	No	Yes	Heritage
No	No	Yes	No	Heritage
No	No	Yes	Yes	Heritage
No	Yes	No	No	Current
No	Yes	No	Yes	Heritage
No	Yes	Yes	No	Heritage
No	Yes	Yes	Yes	Flagship
Yes	No	No	No	Current
Yes	No	No	Yes	Heritage
Yes	No	Yes	No	Heritage
Yes	No	Yes	Yes	Flagship
Yes	Yes	No	No	Current
Yes	Yes	No	Yes	Flagship
Yes	Yes	Yes	No	Flagship
Yes	Yes	Yes	Yes	Flagship

How – Narrowing Down

- Print Monographs
- Rare books
 - Excluding journals and ebooks

How - What information to look at

Stock quantities, and proportions of uncatalogued stock Age of the collections

Rarity

How our collections are used

How it reflects our teaching and research outputs

Practicalities: Collecting the data

Alma

Talis

Measurements from move

Pure

Practicalities: Analysing the data

Move from data to information

Outcomes

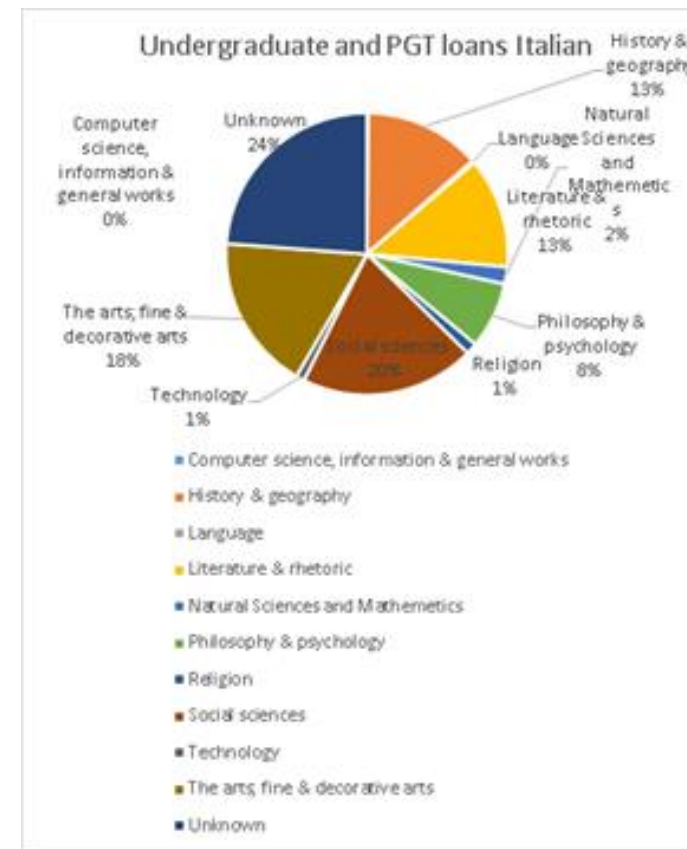
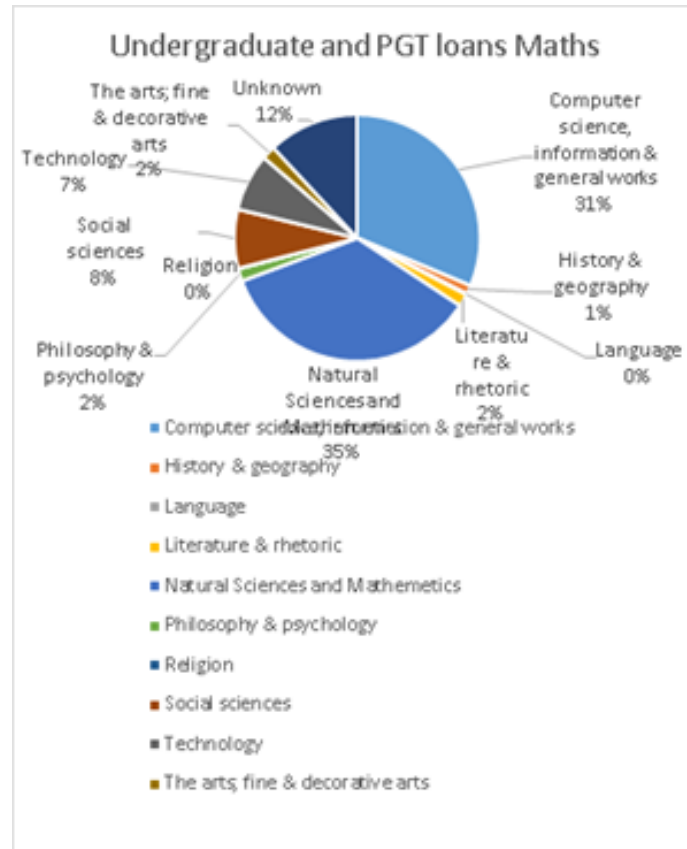
Deliverables and Findings

The report

- Our key deliverable for phase 1

Roadmap

Diversity of use

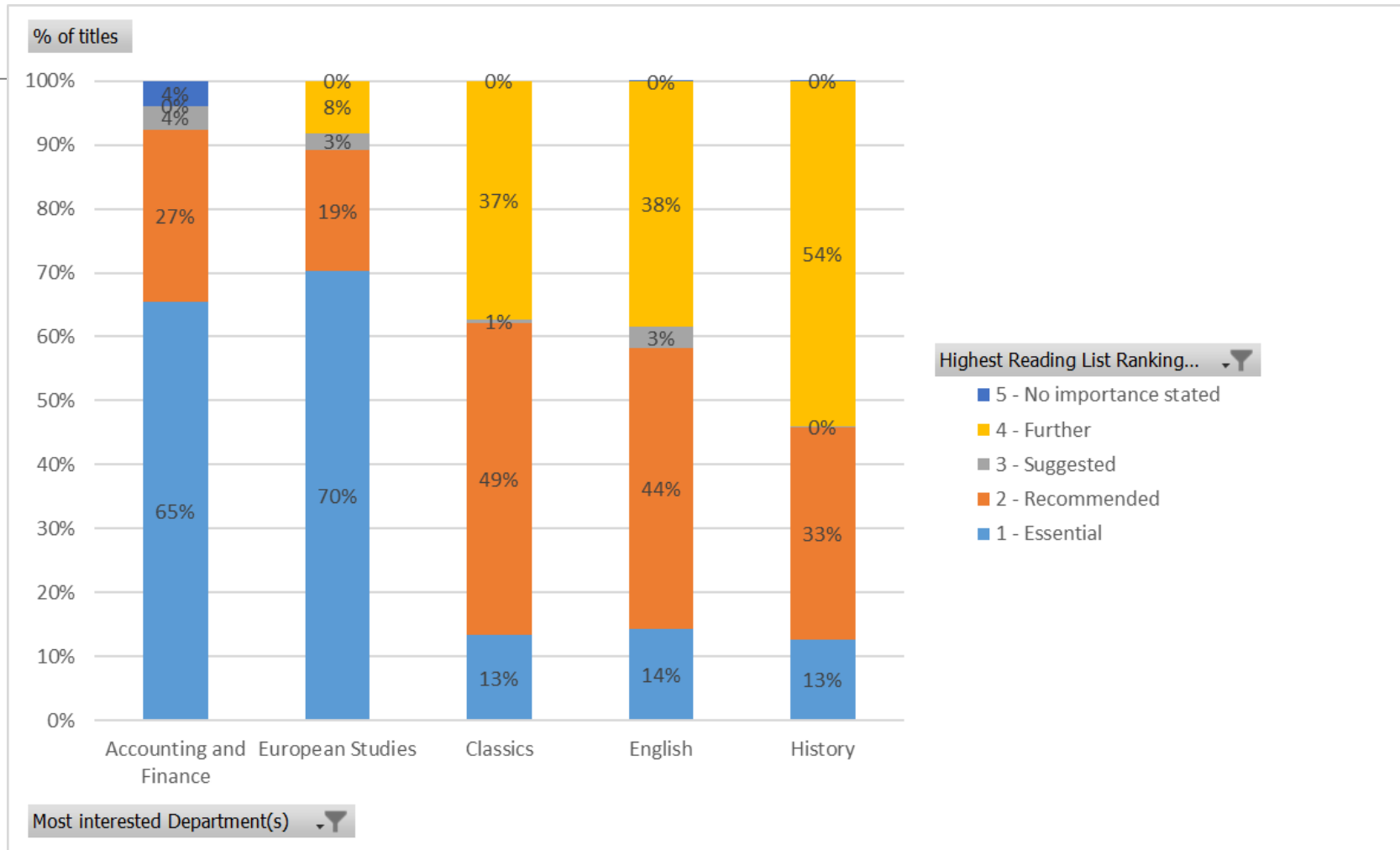




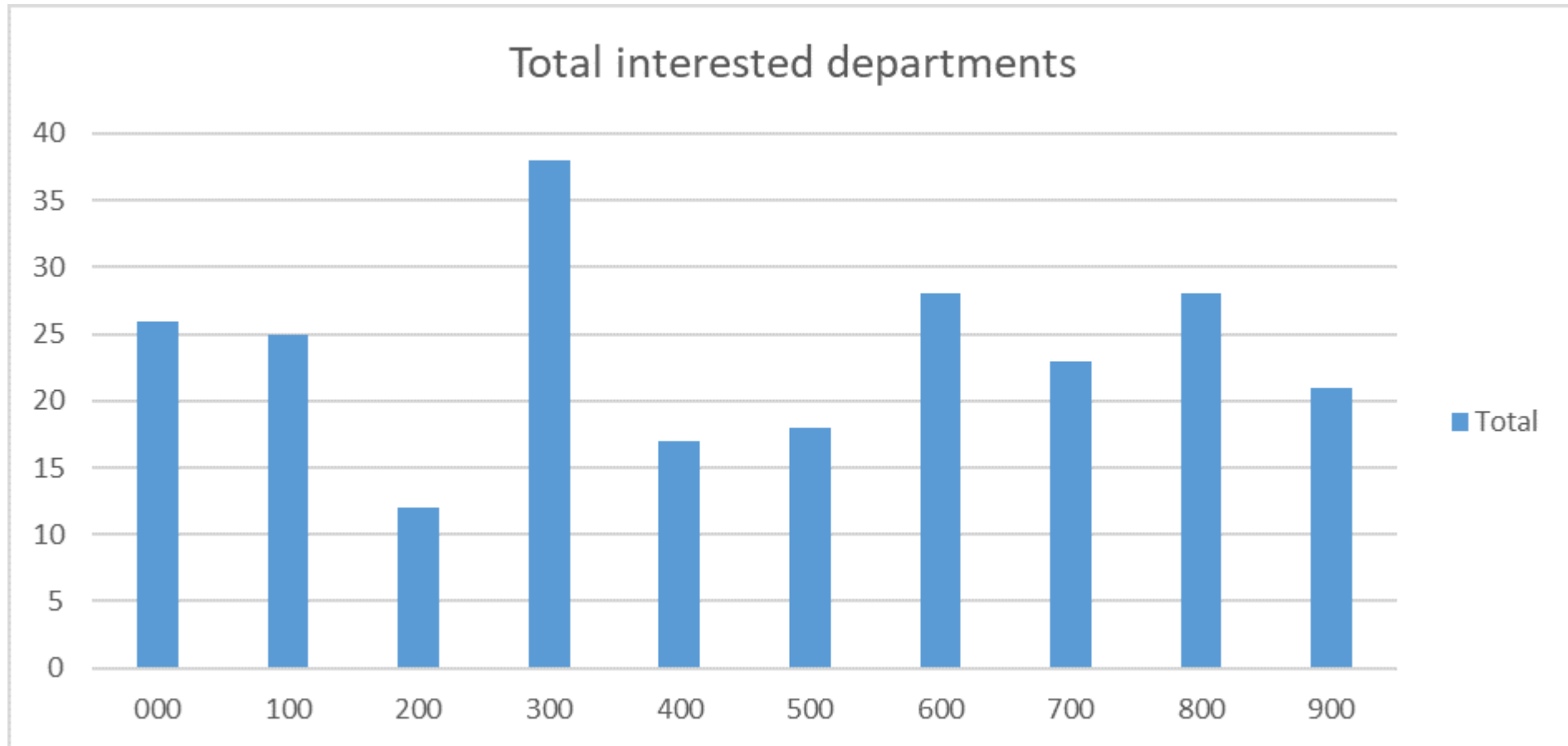
Dewey number	Dewey Area	Subject Area				
0	Computer science, information & general works	Computer Science	Electronic Engineering			
100	Philosophy & psychology	Psychology				
200	Religion					
300	Social sciences	Economics	European Studies	Law	Politics and Intl Relations	Social Work
400	Language	French	German	Hispanic Studies	Italian	English
500	Natural Sciences and Mathematics	Biological Sciences	Earth Sciences	Maths	Physics	
600	Technology	Management	Electronic Engineering	Physics	Biological Sciences	
700	The arts; fine & decorative arts	Drama, Theatre and Dance	Media Arts	Music		
800	Literature & rhetoric	English	French	German	Hispanic Studies	Italian
900	History & geography	Classics	Geography	History		



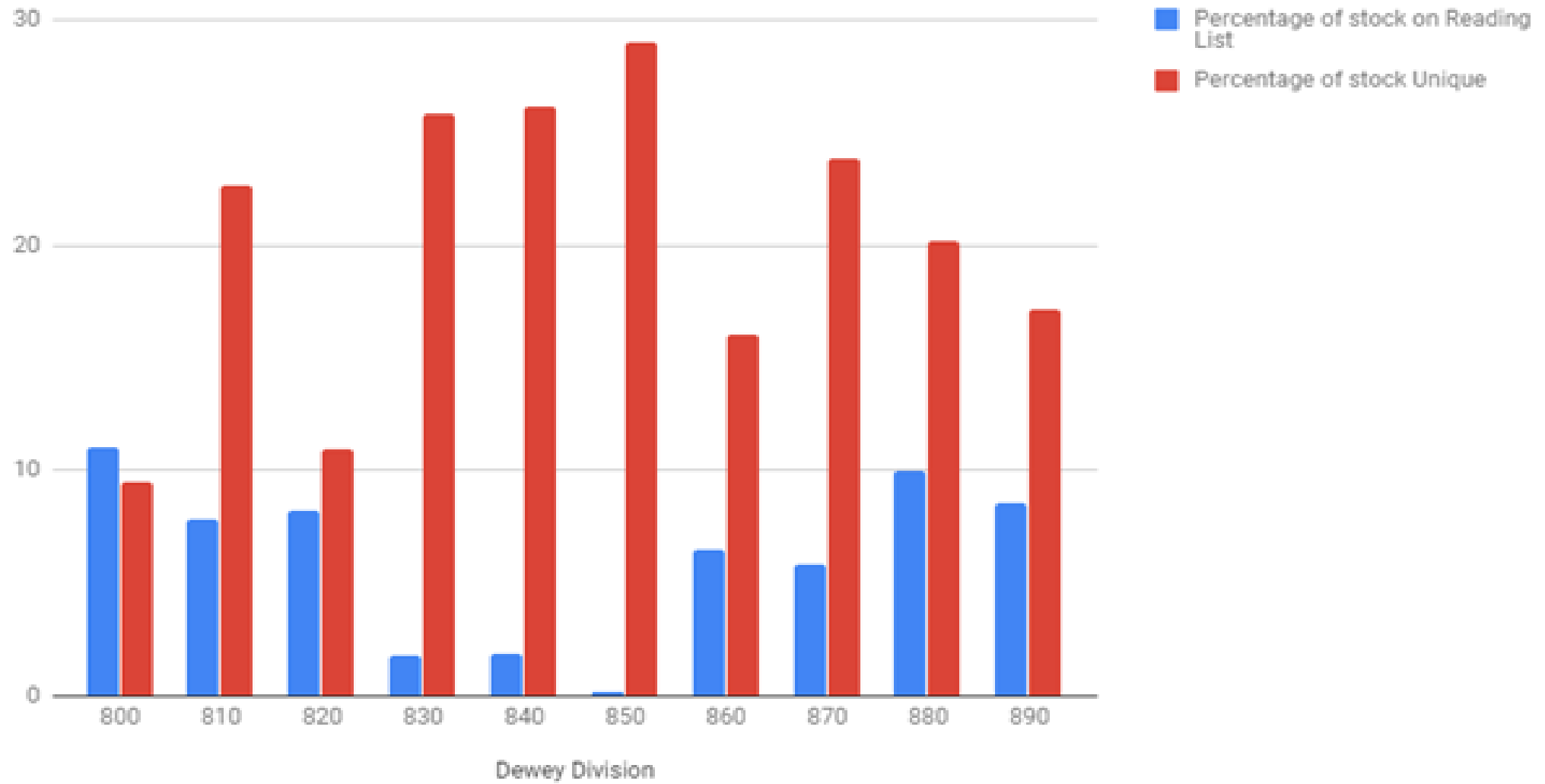
Proportion of reading list importances by department



Interested departments (via reading lists)



Percentage of stock that is on a reading list and percentage that is Unique



Dewey Range	Broad criteria	Notes
000s	Currents	Some divisions may be other criteria
100s	Current	Some divisions may be other criteria
200s	Finite	
300s	Majority Current	Unlikely to have much flagship and will fall across other areas with majority being current. The unique items are likely to be a legacy of not weeding older editions.
400s	Finite	
500s	Current	Likely to have small heritage and flagship collections for niche research areas especially in Earth Sciences. Appears to have large areas of uncatalogued stock. Middle priority for stock take and need to identify divisions that may be heritage or flagship to identify what could be catalogued.
600s	Current and Finite	May have small flagship and heritage collections especially in neuroscience and specialist management collections
700s	Flagship and Heritage	Includes area of research growth such as media, TV and storytelling along with areas of established strength in Drama and Media
Scores	Flagship	This is our most unique and rare distinct collection which also supports teaching and research. The highest priority for further examination, stock take and cataloguing work.
800s	Flagship and heritage	Whilst a large amount of this material appears to fall into flagship and heritage this area needs further exploration as there are also large finite collections such as German Literature. The 820s should be the focus of work on cataloguing and stock taking.
900s	Flagship and Heritage	More work needed on specific sections but supports areas such as Crusades, Holocaust and West Asian studies which have formed what we believe to be flagship or heritage collections. Appears to have large areas of uncatalogued stock, as they are likely to be flagship and heritage, after the scores this area should be a priority for further examination and investment in cataloguing.

Future Outcomes (Based on Roadmap)

More detailed analysis of the divisions especially in the areas with likelihood of Flagship collections - January 2019

Identify areas for active collection development i.e. Geological Surveys, Television, Storytelling, Drama and Holocaust Studies - January 2019

Collaboration and benchmarking with Senate House and the University of London - Timeline to be decided by the Collection Action Group but ongoing

Repeat exercise with Journal and Eresources - September 2019

Finalising information in ALMA - August 2019

Reporting to Departments - Easter 2019

Capture information for new stock

Archives - identifying Flagship items as well as collections

Stocktake - prioritising Flagship and Heritage collections - Summer Project 2019

Cataloguing uncatalogued stock in the Flagship and Heritage areas (Scores, 900s, 550s and 820s - priority) - Summer 2019

Weeding areas of uncatalogued stock in the current and finite areas - Complete by Easter 2020

Identifying other libraries who might be interested in our finite collections (i.e. our finite might be someone else's flagship) - Summer 2019

Link ILL decision making and other purchases with the collection mapping work

Future Outcomes (Based on Roadmap)

- | More detailed analysis of the divisions especially in the areas with likelihood of Flagship collections—January 2019
- | Identify areas for active collection development i.e. Geological Surveys, Television, Storytelling, Drama and Holocaust Studies—January 2019
- | Collaboration and benchmarking with Senate House and the University of London - Timeline to be decided by the Collection Action Group but ongoing
- | Repeat exercise with Journal and Eresources—September 2019
- | Finalising information in ALMA—August 2019
- | Reporting to Departments—Easter 2019
- | Capture information for new stock—
- | Archives—identifying Flagship items as well as collections
- | Stocktake—prioritising Flagship and Heritage collections—Summer Project 2019
- | Cataloguing uncatalogued stock in the Flagship and Heritage areas (Scores, 900s, 550s and 820s—priority)—Summer 2019
- | *Weeding areas of uncatalogued stock areas characterised as current and finite - Complete by Easter 2020*
- | Identifying other libraries who might be interested in our finite collections (i.e. our finite might be someone else's flagship) - Summer 2019
- | Link ILL decision making and other purchases with the collection mapping work

Where did it all go wrong?

Everyone left us!

Changing priorities from College senior management meant prioritizing our work

Budget

It was more time consuming than we originally assumed

Some positives from the experience

Amended and more realistic roadmap

We are in discussions to get rid of (sensitively relocate) some of our rare but poorly used stock

Gained skills/ upskilled staff in different teams

Brought every team together

Helpful to understand the extent of the issues with our data

Reinforced importance on dealing with stock issues

Thank you!

David Morgan: @DavidMorganEsq

david.morgan@rhul.ac.uk

Amy Stubbing: @amyodo

a.stubbing@westminster.ac.uk